

Projections of Physician Supply in Canada

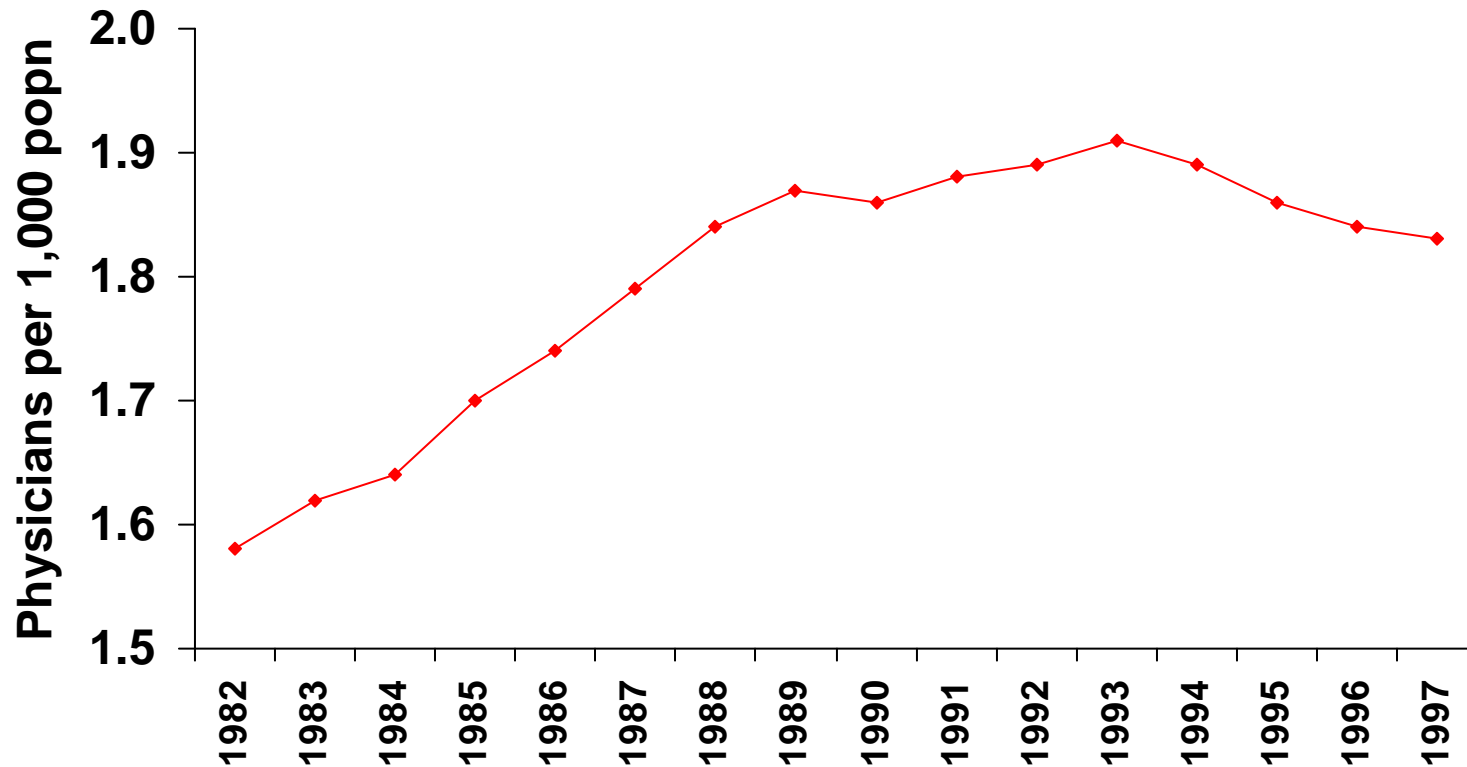
Lynda Buske

Director, Workforce Research

Canadian Medical Association

December 6, 2007

Physicians per 1,000 population Canada, 1982 to 1997

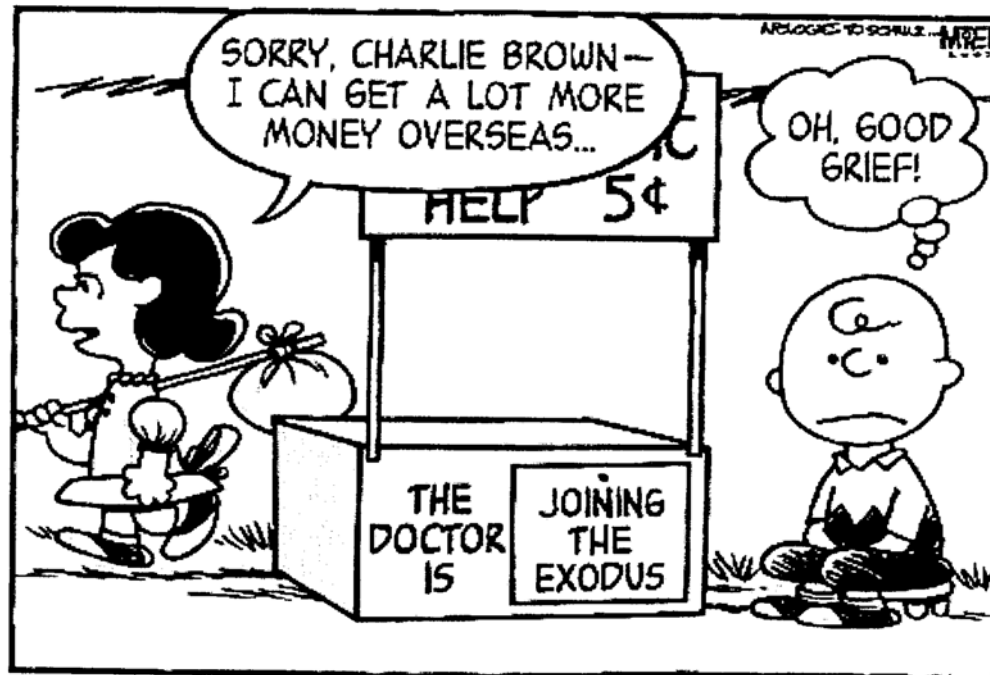


Source: Scott's Medical Database, CIHI



The environment in 1997

- Net losses to emigration for previous 5 years totalled over 2000 physicians.

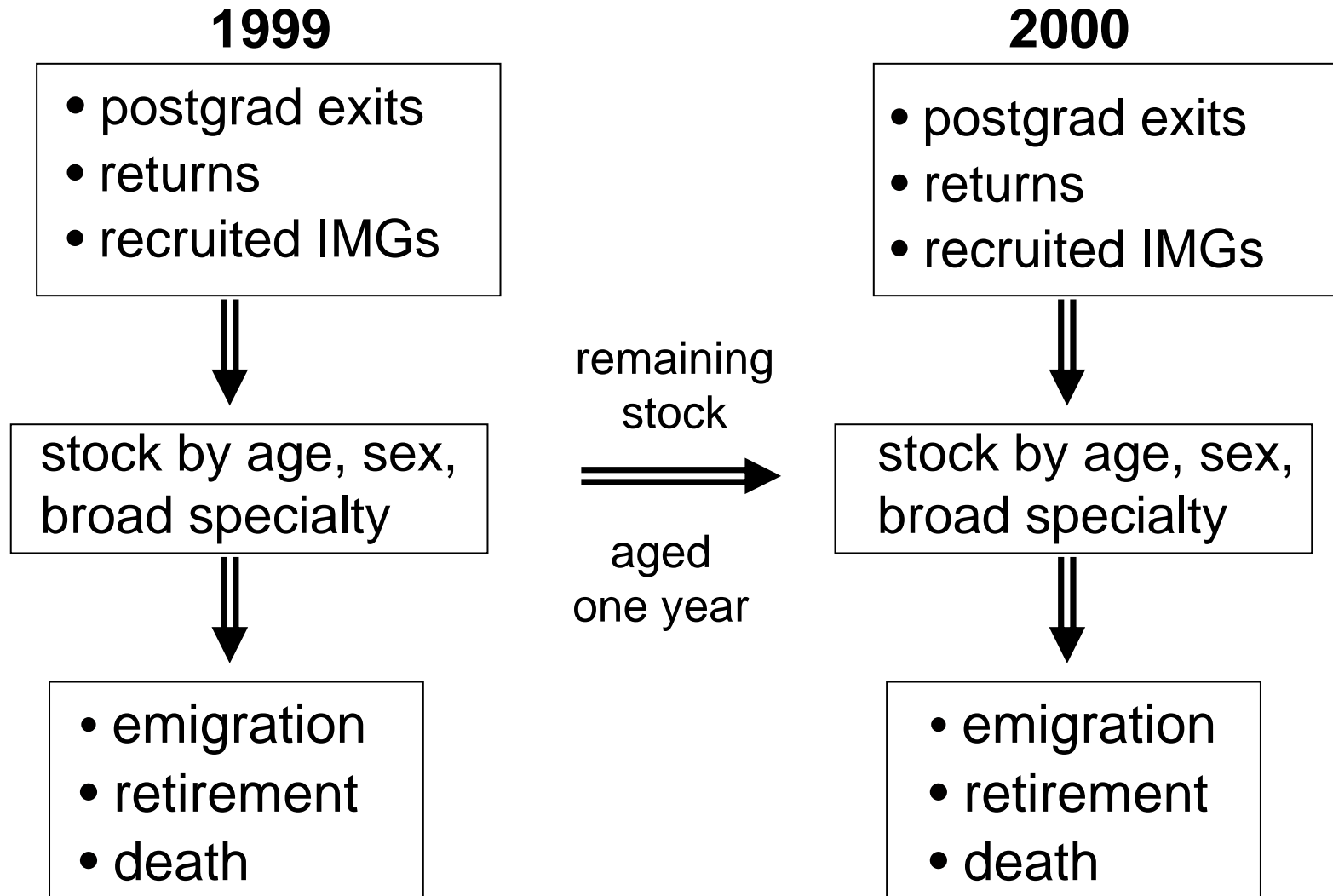


The environment in 1997 (cont'd)

- Feeling effects of 1992 10% reduction in undergraduate enrolment .
- Shift to two year pre-licensure requirement for portable licensure in Canada
- Increased retirement of physicians
- Data quality improvements to eliminate some double counting of physicians

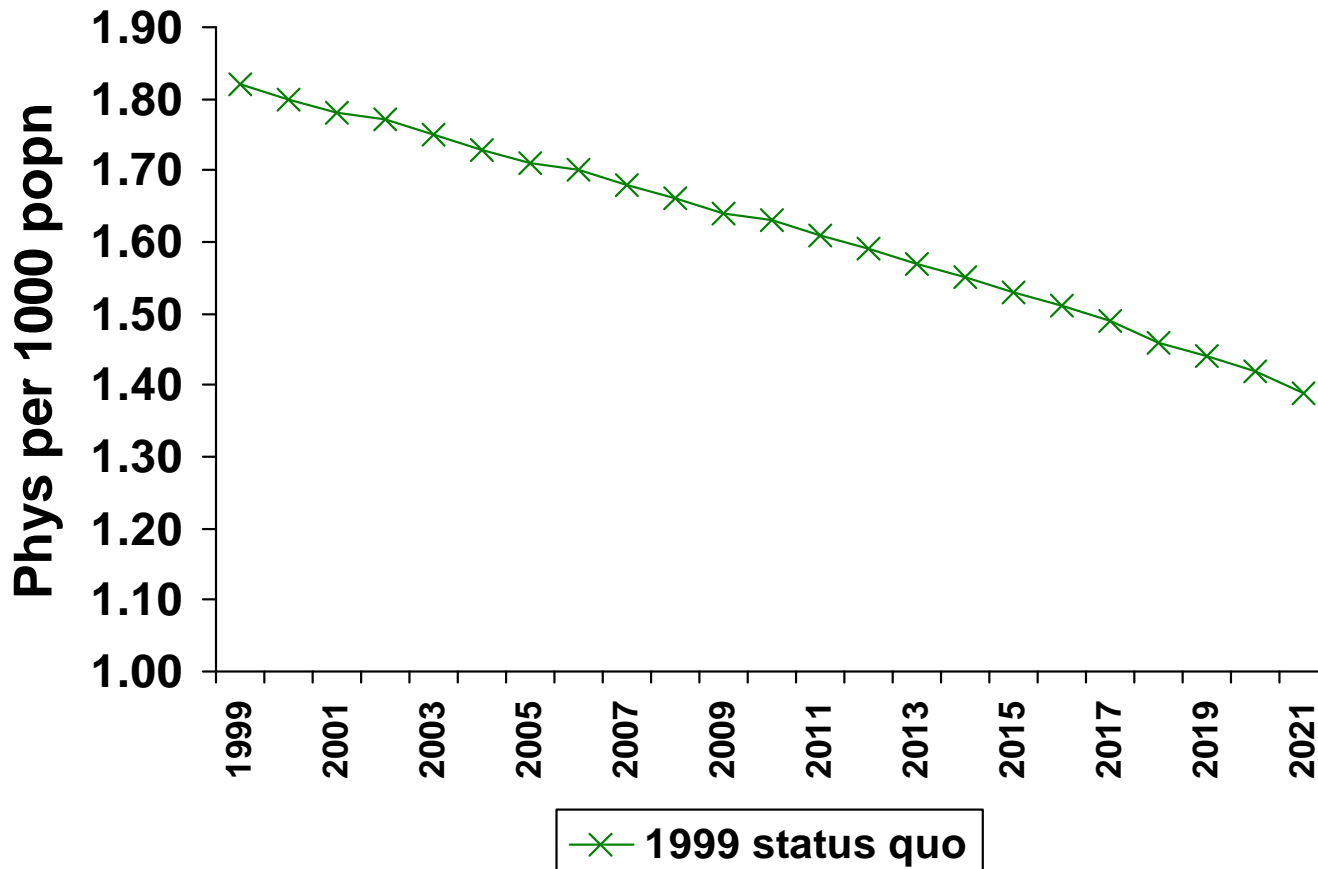


CMA Physician Resource Evaluation Template (PRET)



Projected Physician Supply

MDs/1,000 pop – 1999 Status quo scenario



Source: CMA Physician Resource Evaluation Template

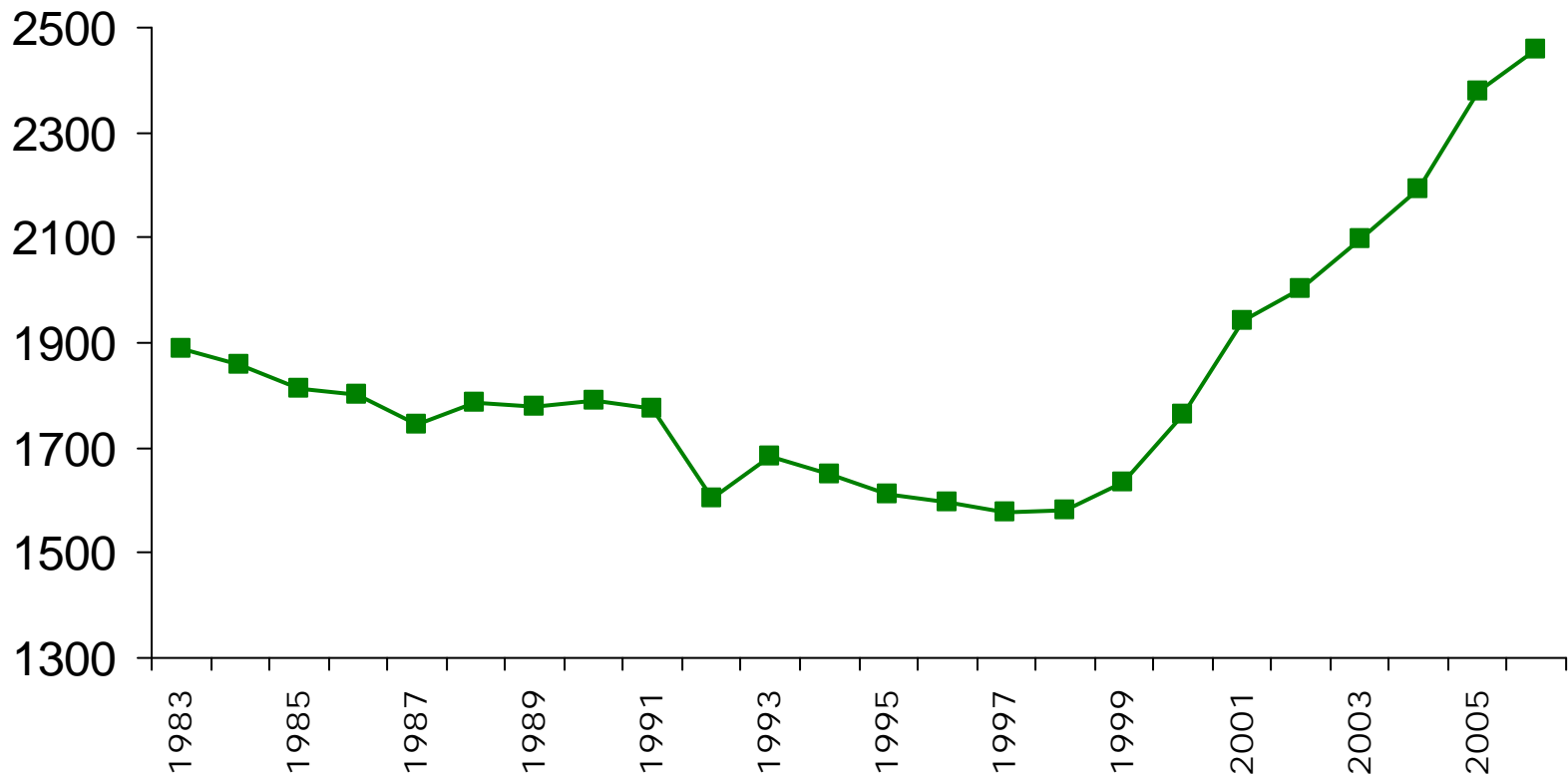


The environment in 2007

- Many fewer emigrating, net gains for last 3 years of around 50 MDs per year.
- Over 50% increase in undergraduate enrolment since 1997.
- Drop in retirement rates post 2001.
- Decrease in population estimates from Statistics Canada.



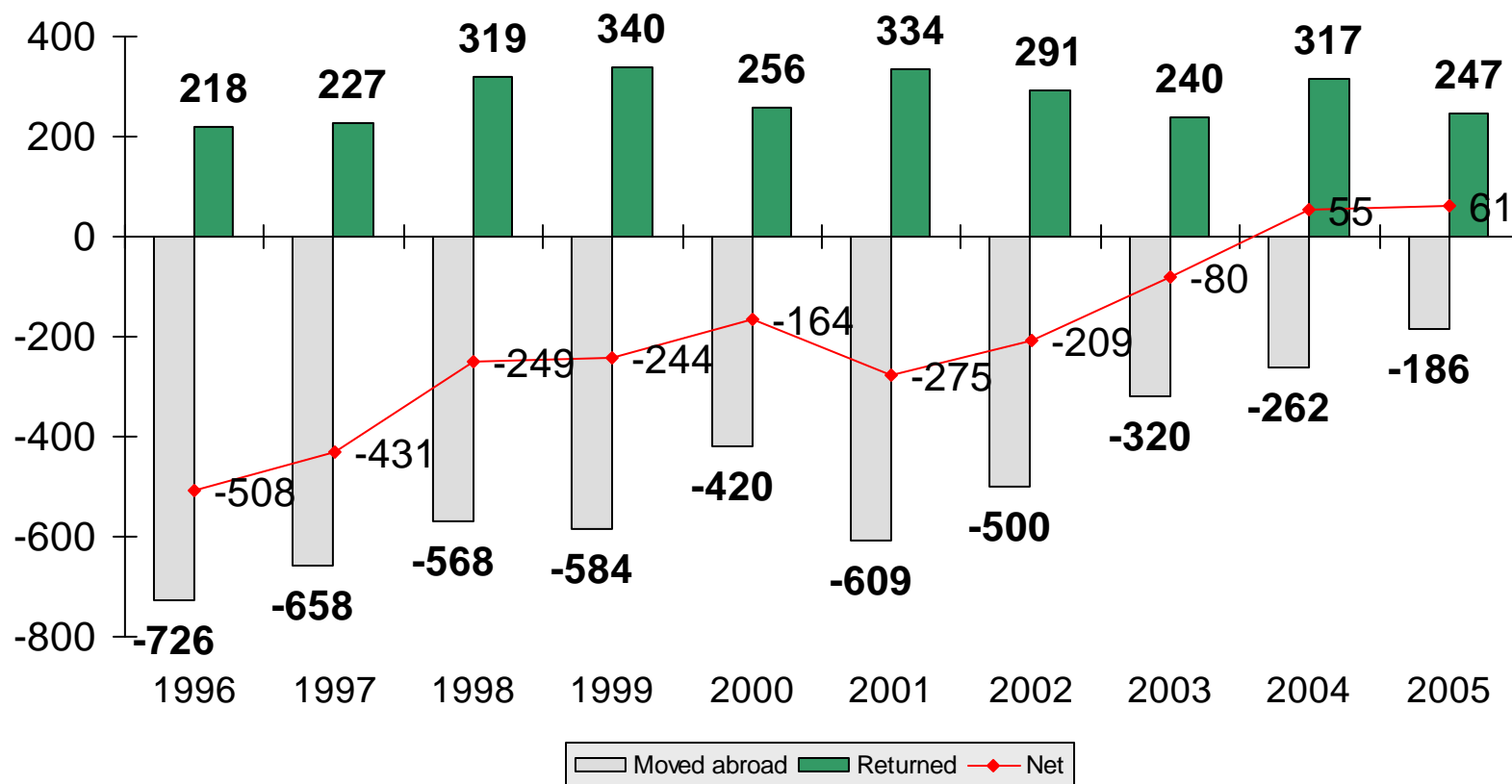
First Year Enrolment in Medical Schools (including 40-50 visa students)



Source: Medical Education Statistics, AFMC



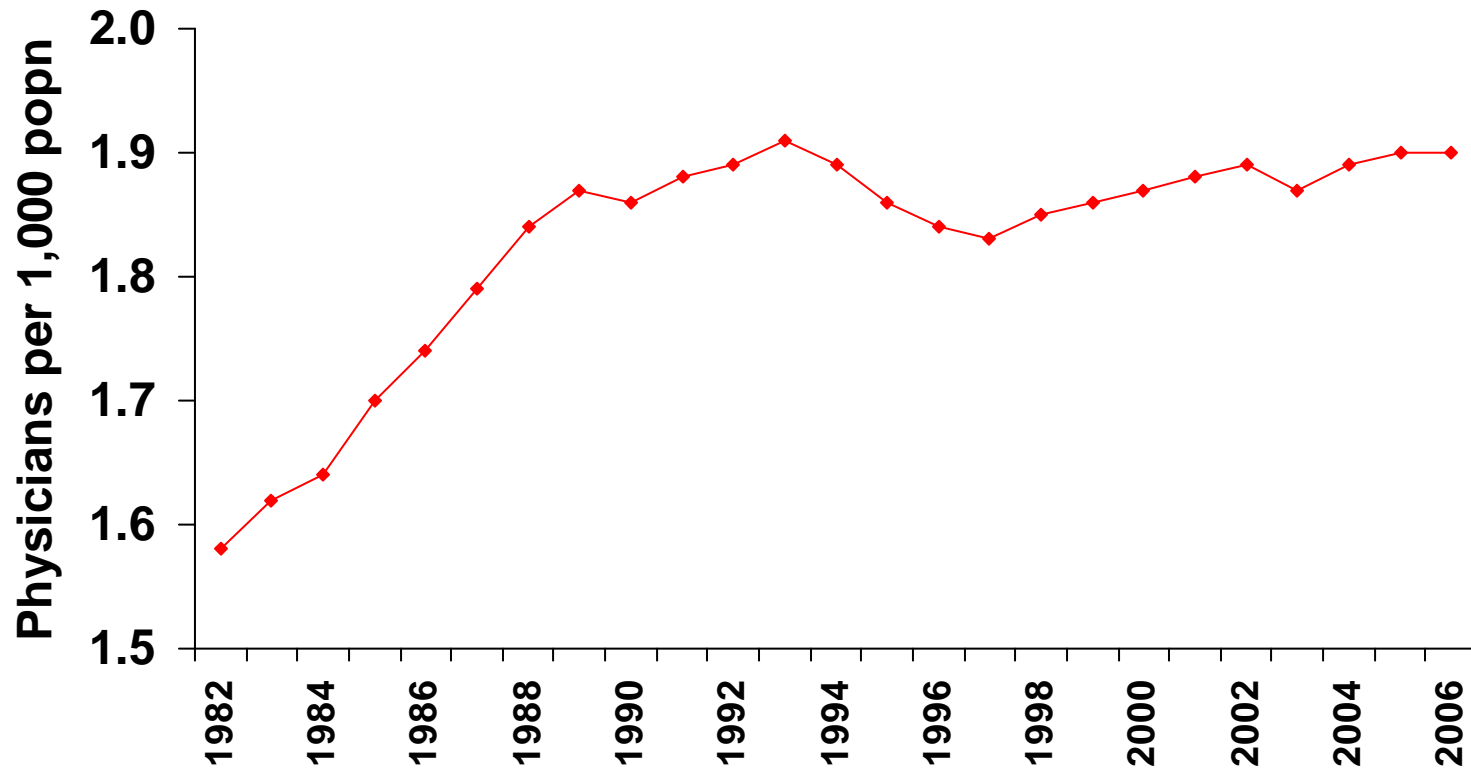
Migration of practising physicians (excludes residents)



Source: Supply, Distribution and Migration of Canadian Physicians, CIHI



Physicians per 1,000 population Canada, 1982 to 2006

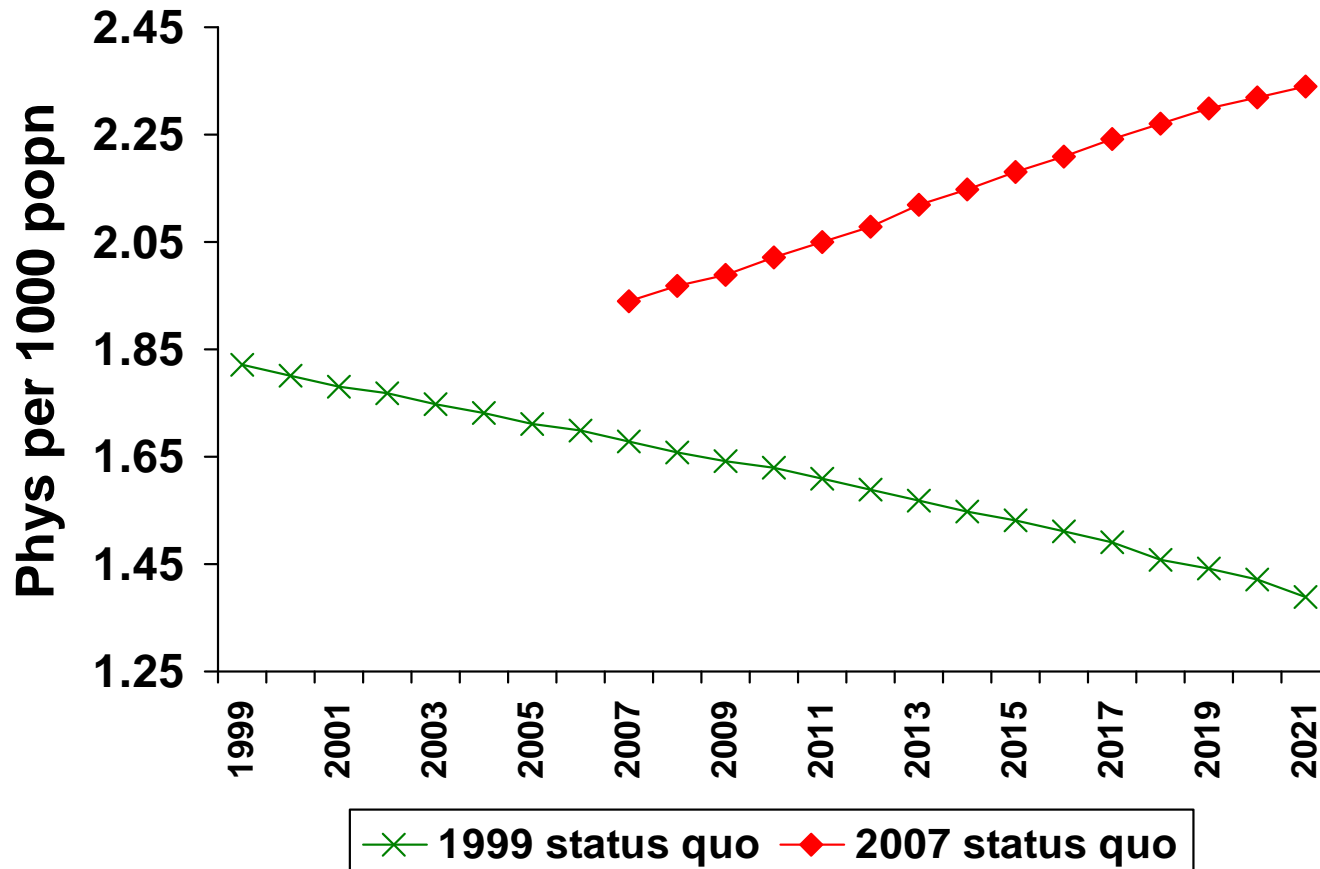


Source: Scott's Medical Database, CIHI



Projected Physician Supply

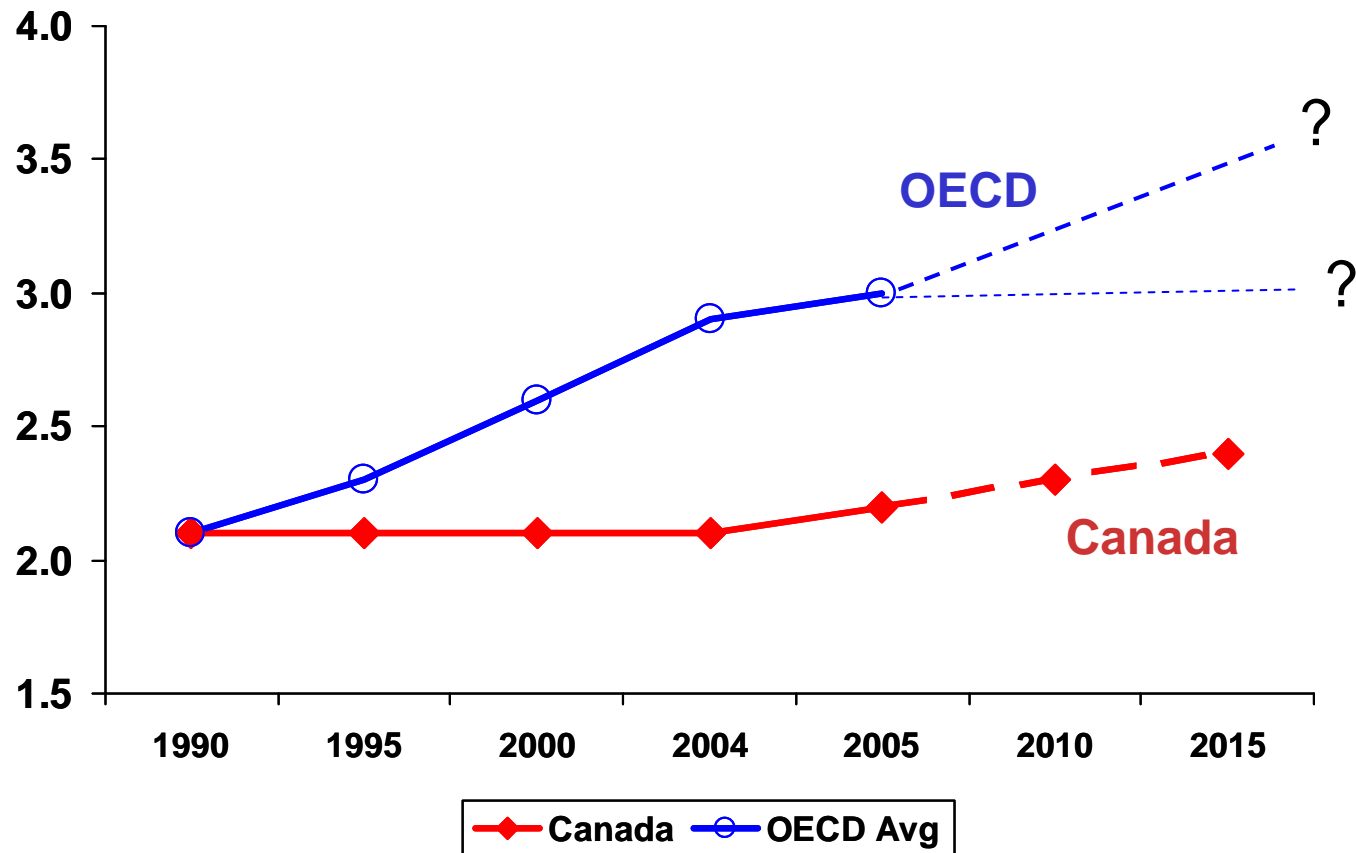
MDs/1,000 pop – Status quo scenario



Source: CMA Physician Resource Evaluation Template



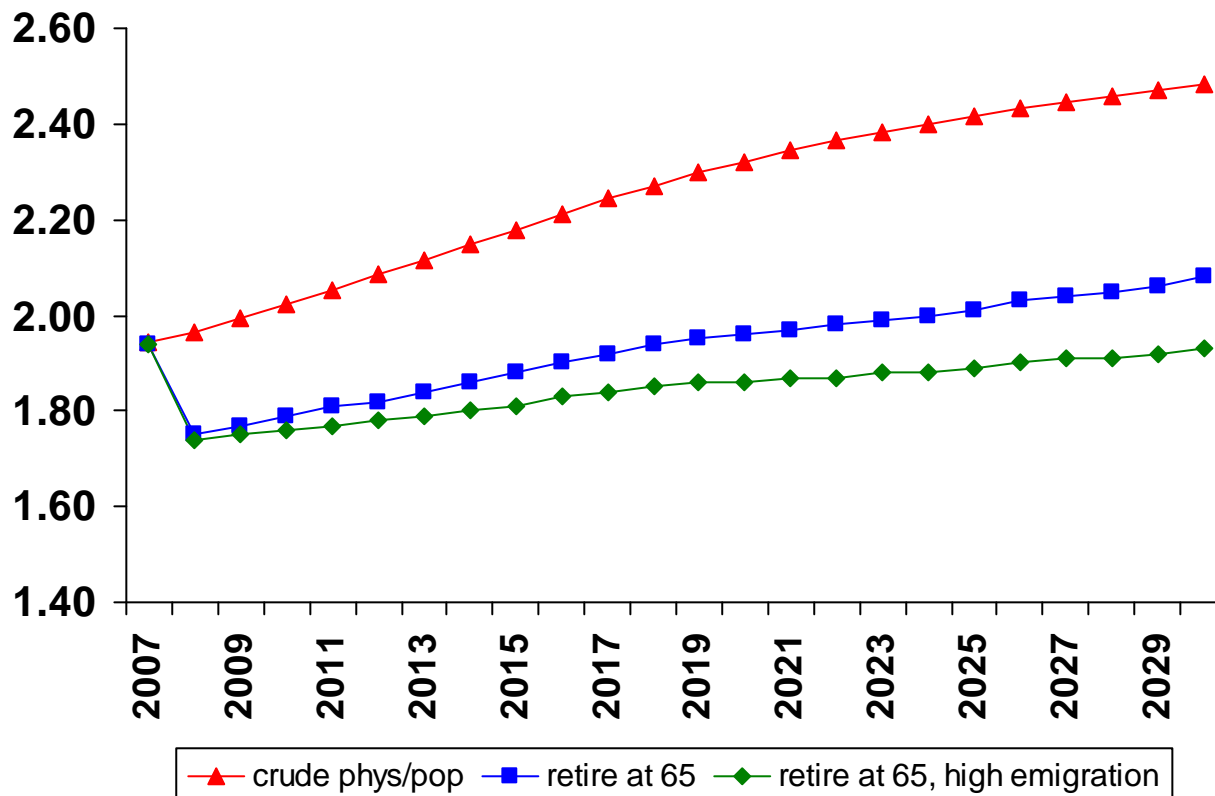
Physicians per 1000 population



Source: OECD 2007 Health Data; CMA
Physician Resource Evaluation Template



Projected Physician Supply Scenarios

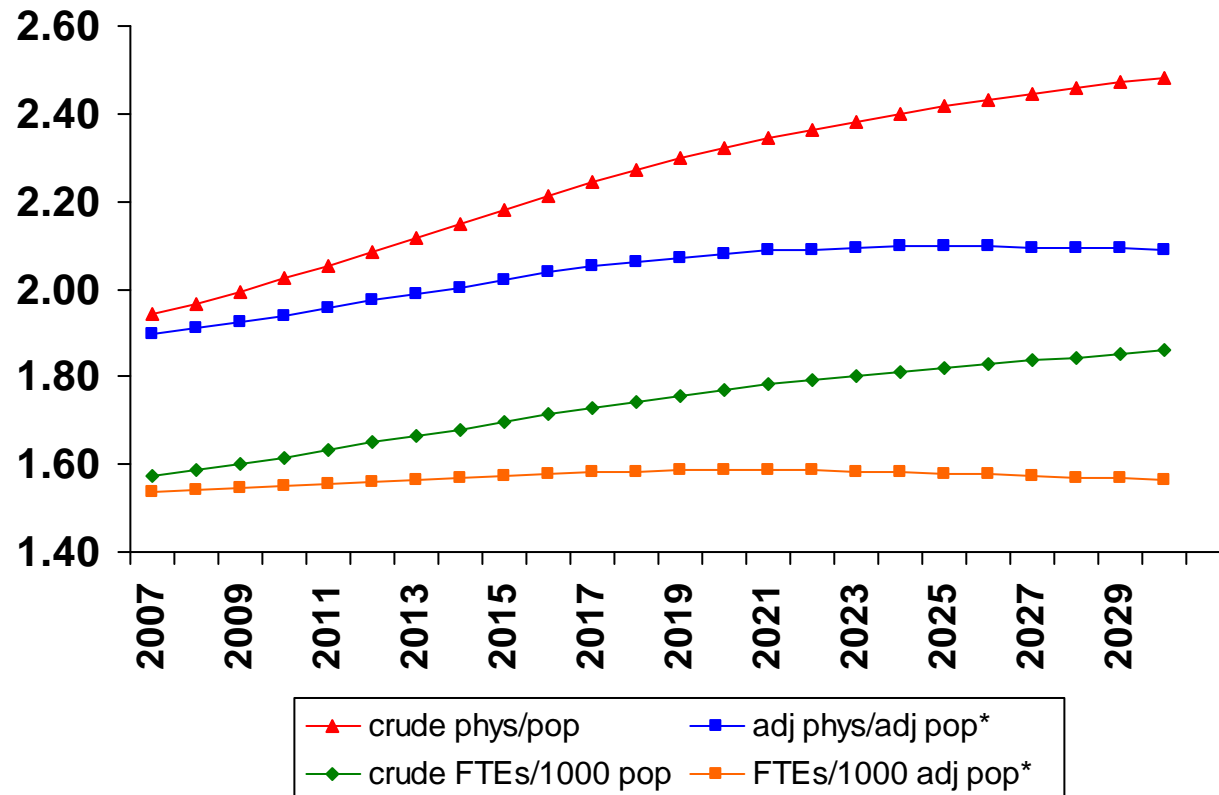


Source: 2007 CMA Physician Resource Evaluation Template



MDs & FTEs/1,000 population

Status quo scenario



* Adjusted for age-sex of population based on physician expenditures

Source: 2007 CMA Physician Resource Evaluation Template



Why supply might not feel bountiful

- **Shift to reduced workload; new family physicians do not want patient loads of 3,000.**
- **Increasing proportion of females physicians (60% of grads).**
- **Increasing chronicity of disease and complexity of patients.**
- **New ways of treating both old and new diseases.**

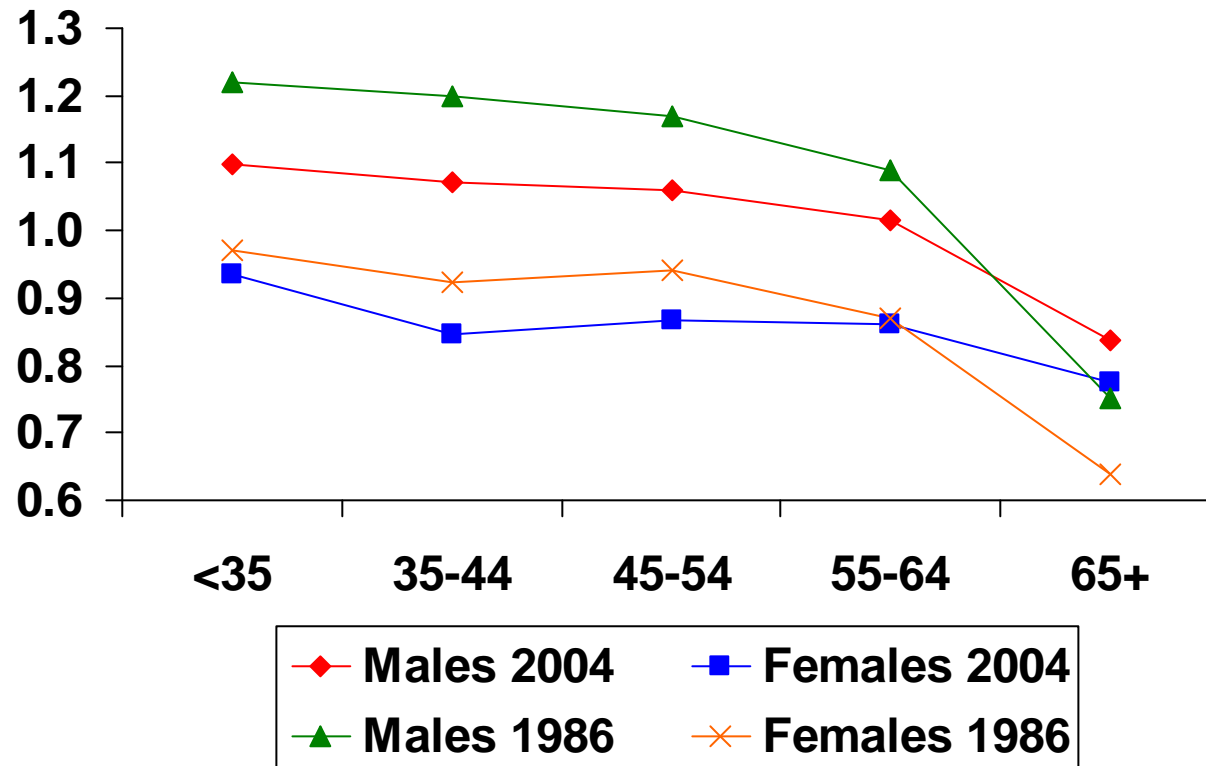


Why supply might not feel bountiful

- **New quality of life standards.**
- **Quebec is short 1000 specialists and 800 family physicians.**
- **Alberta needs 1000 more physicians.**
- **Ontario is needs 2,000 more doctors.**
- **5 million Canadians do not have a family physician.**



FTEs based on direct patient care of 35 hrs/wk (excluding call)

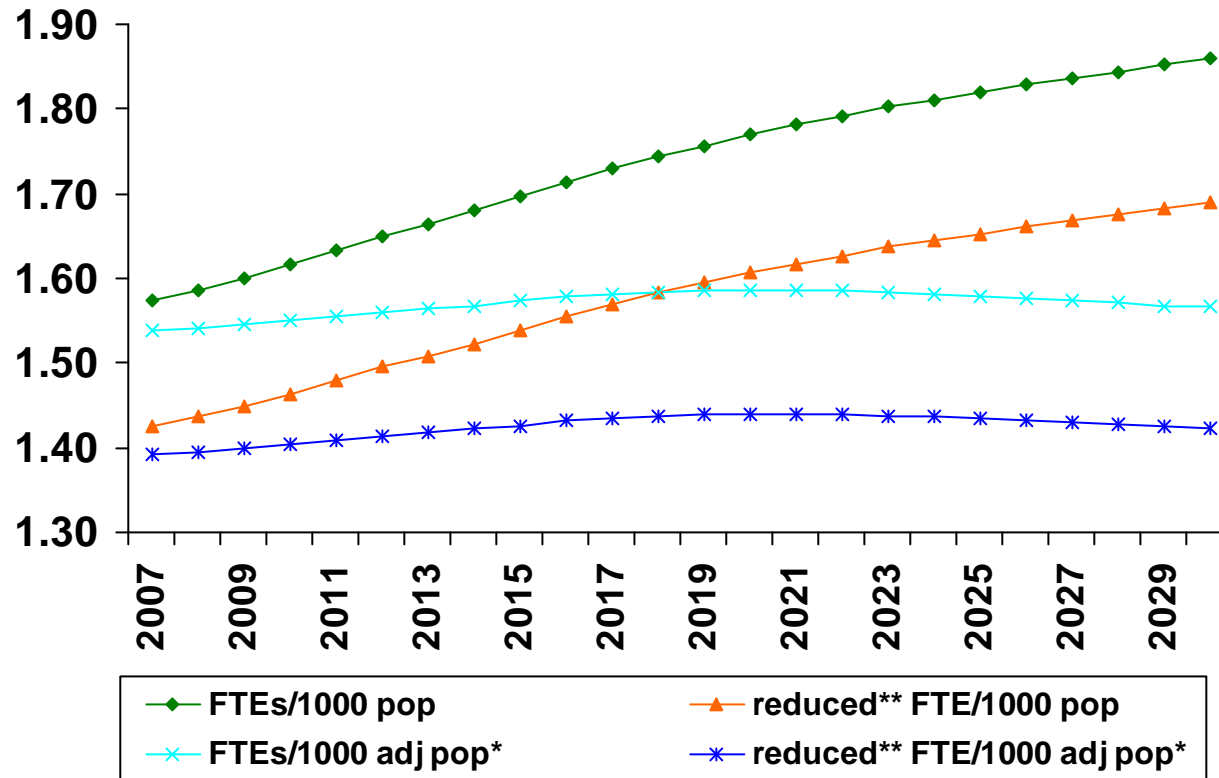


Sources: 2004 National Physician Survey,
1986 CMA Physician Resource Questionnaire



Projected Physician Supply

Reduced FTEs per 1,000 population



* Adjusted for age-sex of population based on physician expenditures

** Reduction of workload by 10%

Source: 2007 CMA Physician Resource Evaluation Template



CMA Canadian Collaborative Centre for Physician Resources

www.cma.ca/c3pr

